

Instructions for making pop-up cards

Nativity scene pop-up card

- 1 Fold the paper carefully in half both ways.
- 2 Complete the Nativity scene leaving space below the roof.
- 3 You can draw at the sides but not below the dashed line along the bottom.
- 4 Decorate and write on the outside of the card.
- 5 With the paper folded lengthways and the stable picture facing outwards cut through both thicknesses of the dashed lines which go across the top and bottom of the roof and below your picture.
- 6 Cut out the scene within the stable.
- 7 Fold the sheet up along the original folds so that the scene pops out when you open it up.

Christmas Tree pop-up card

- 1 Fold the paper in half lengthways making sure that the fold comes exactly in the centre of the tree.
- 2 Trim the paper if necessary.
- 3 Fold it in half the other way.
- 4 Decorate the tree and the front of your card.
- 5 Carefully cut the dashed lines above and below the tree, and cut away the shaded rectangles.
- 6 Cut around the tree, cutting round any decorations you have put on it, but do NOT cut the lines where the tree crosses the top band. It is better not to cut when the card is folded.
- 7 Fold up the card again so that the tree pops out when it is folded.

To make a pop-up card with your own drawing

The snowman can be used for the 'Draw your own' if wanted.

- 1 Fold the sheet carefully in half both ways.
- 2 With the paper folded lengthways cut the four dashed lines on the sheet.
- 3 Fold up the card so that the two strips marked A come forward when the card is closed (Figure 1).
- 4 Draw a picture on another piece of paper not larger than 7 cm wide and 13 cm high. Cut out your picture leaving the left-hand side and the base with square edges.
- 5 Paste your picture over the part of the strips marked A making sure the edge of your picture is square with the front of the card (Figure 2).

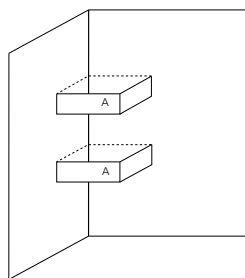


Figure 1

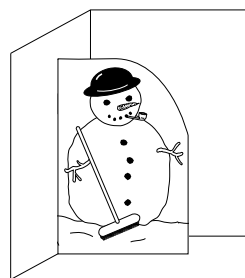
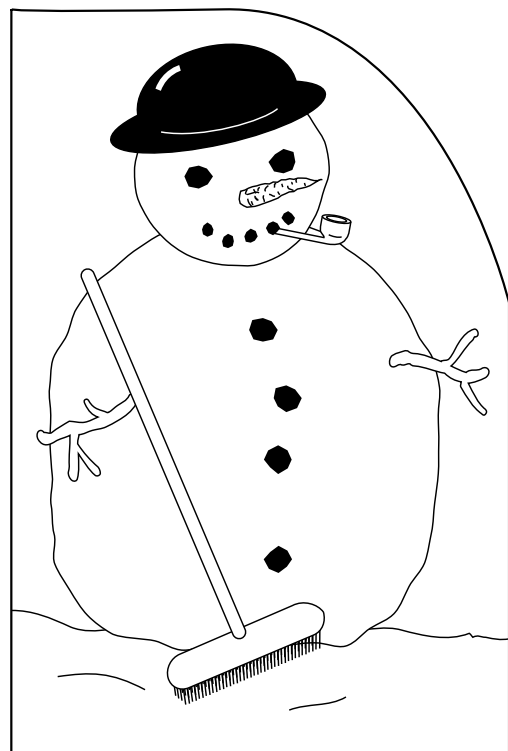


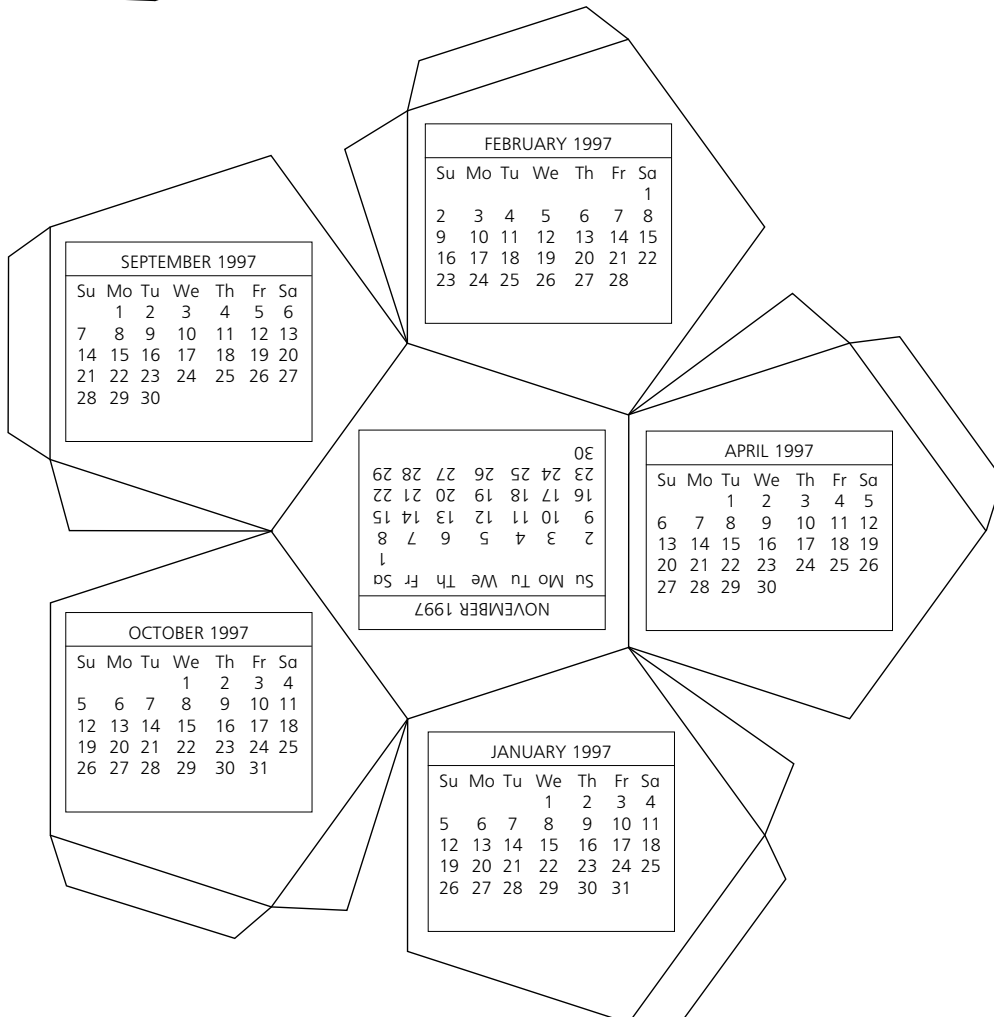
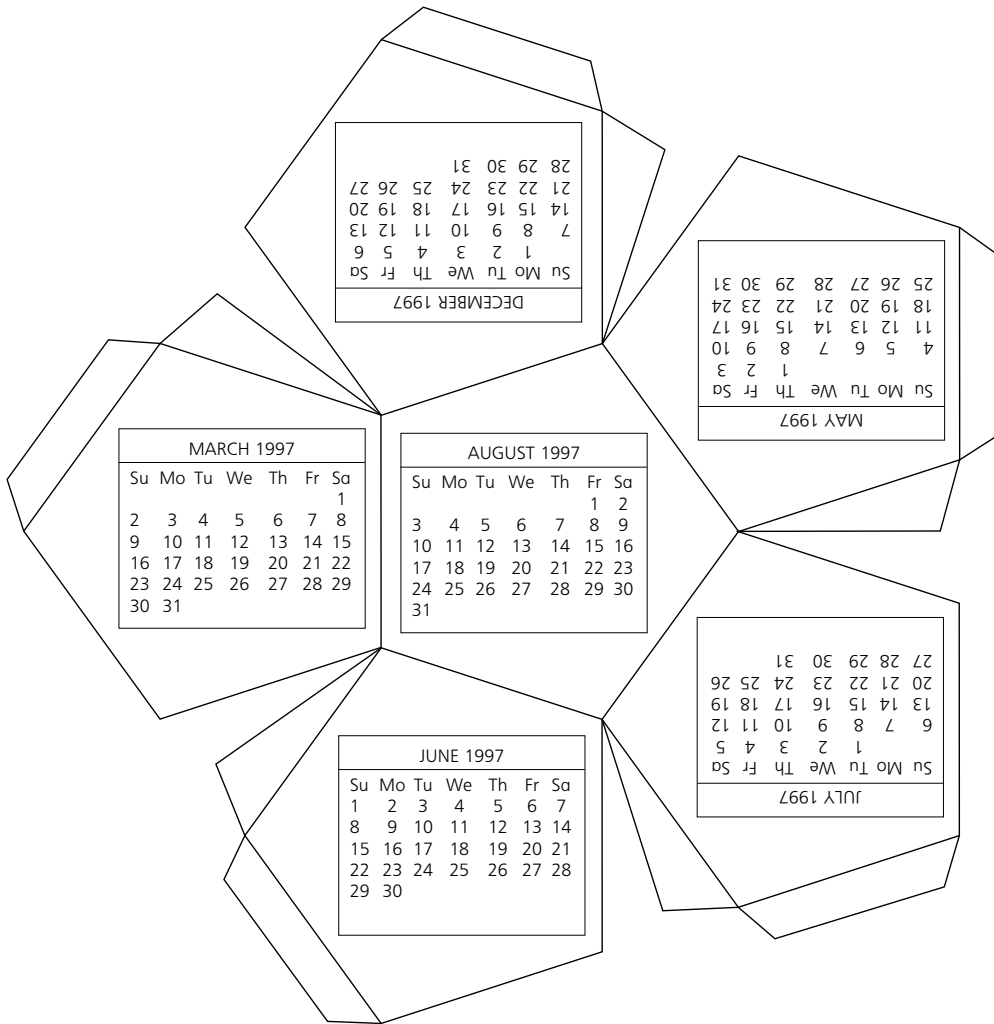
Figure 2



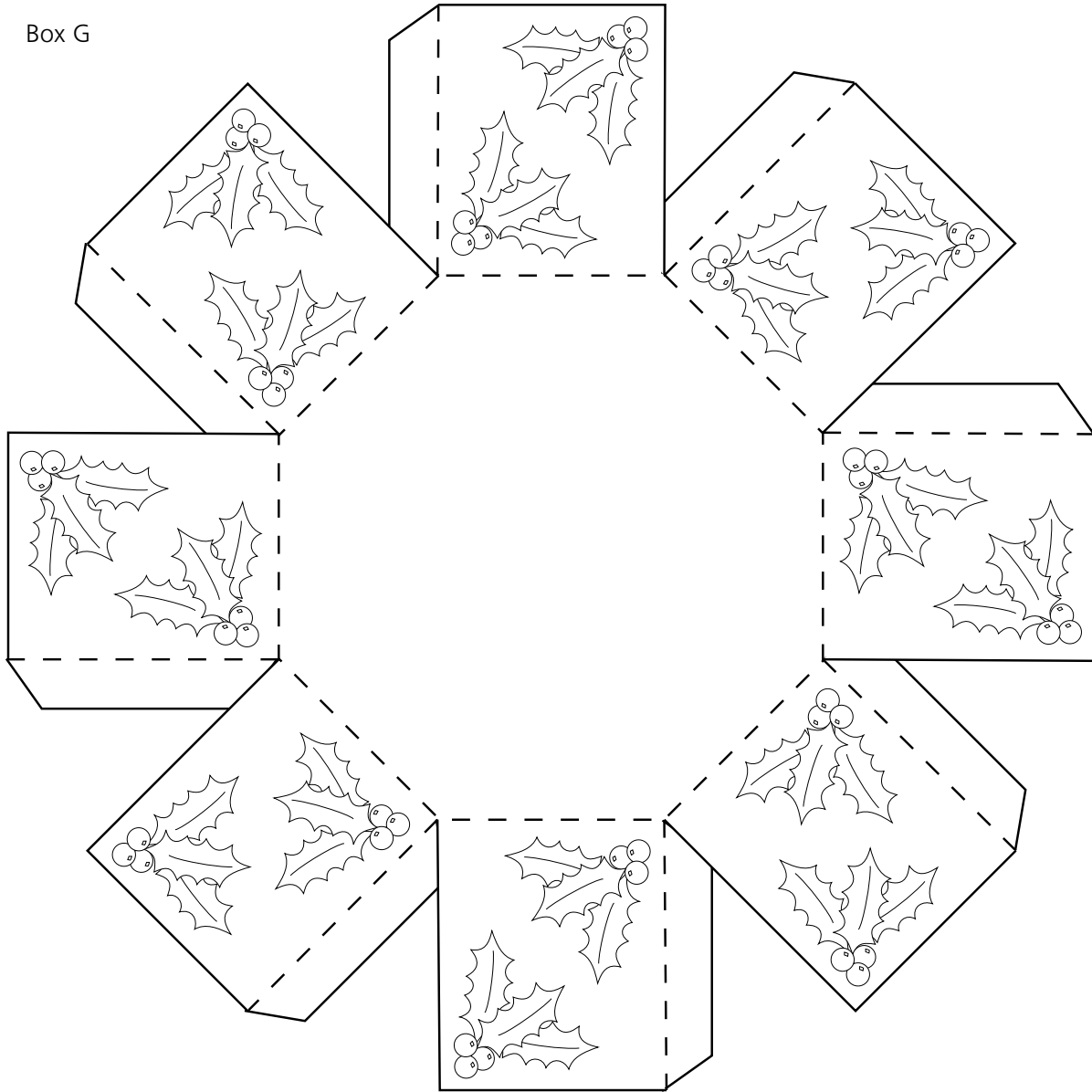
To make up model

- 1 Cut out both pieces very carefully.
- 2 Score all lines with an old biro or scissor point.
- 3 Decorate with pens or coloured pencils.
- 4 Fold away from you carefully along fold lines.
- 5 Make up each cup separately first.
- 6 Stick each cup together to make a ball-like shape.

More detailed instructions and other ideas will be found in the Teacher's notes.



Box G



Cut along solid lines.
Then fold all dashed lines
outwards – away from
you.

Lid

